

Maintenance-Free Living

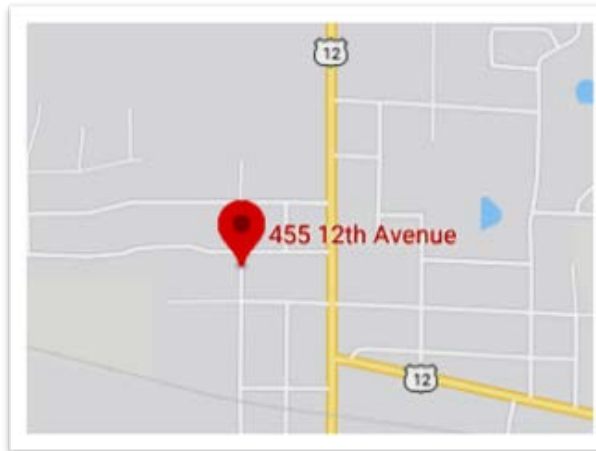
Leave behind home maintenance, snow removal and lawn care. Enjoy the convenience and company available at Ann Crider Villa.



Questions?


If you have any questions, would like additional information or an application, please call or email the Community Manager.


Schedule a visit today!




Rental Office

Ann Crider Villa
455 12th Street
Baldwin, WI 54002

 715-419-2238

 715-972-8948

 HUDSONREGION@IMPACTSEVEN.ORG

 IMPACTSEVEN.ORG



"This institution is an equal opportunity provider and employer."



ANN CRIDER VILLA

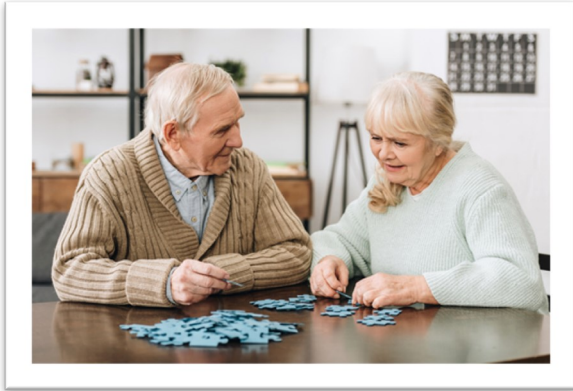
SENIOR HOUSING FOR
62 AND OLDER

PROFESSIONALLY MANAGED BY
IMPACT MANAGEMENT GROUP, LLC.



455 12th Street
Baldwin, WI 54002
Phone: 715-419-2238
Fax: 715-972-8948

ANN CRIDER VILLA: BALDWIN, WISCONSIN



Service Coordinator

There is a Service Coordinator available to assist residents at Ann Crider Villa. They help link residents with services they need to continue living independently, advocate on behalf of residents, educate residents, and build a sense of community. Service Coordinators can connect residents to more than 20 types of services, including transportation, health care, meals, monitoring and employment.

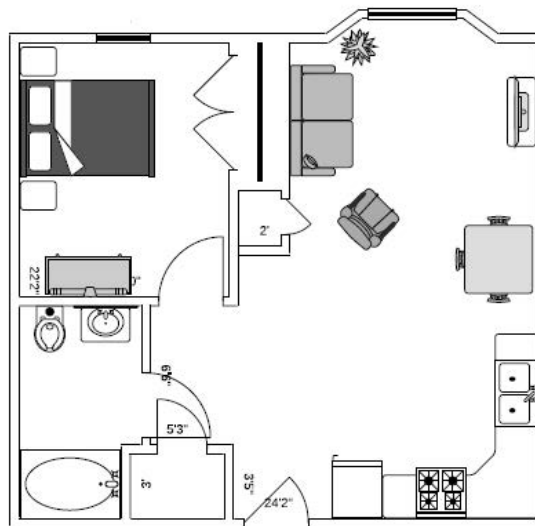
Apartment Amenities

- 1-Bedroom Apartments
- Heat, Water, Sewer, and Trash Included
- Cable Ready
- Air Conditioning
- Extra Storage
- Some Garages Available (monthly fee)

Community Amenities

- 24-hr Emergency Maintenance
- Off-street Parking
- On-site Laundry
- Patio/Grill
- Community Room
- Service Coordinator
- Pet Friendly

Floor Plan 1 Bedroom



Rent Information

- Qualified applicants must be 62 or older.
- Resident pays 30% of their adjusted income.
- Security deposit is equal to one month's rent + utility allowance.

Sample Rent		Potential Rent	
Monthly Income	\$900	Monthly Income	\$ _____
	X		X
Percent of Adjusted Income	30%	Percent of Adjusted Income	30%
	=		=
Gross Rent	\$270	Gross Rent	\$ _____
	-		-
Utility Allowance	\$30	Utility Allowance	\$ _____
Net Rent	\$240	Net Rent	\$ _____

Unsure if you or a family member qualifies? Our Community Manager would be happy to assist you!