

Maintenance-Free Living

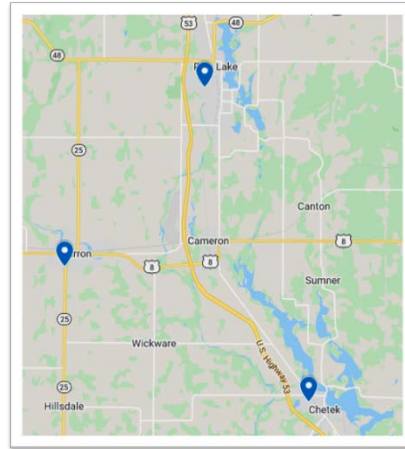
Leave behind home maintenance, snow removal and lawn care. Enjoy the convenience and company available at Barron County Housing.



Questions?

If you have any questions, would like additional information or an application, please call or email the Community Manager.


Schedule a visit today!





- Maple Park Apartments:** 36 W. Maple Avenue
Barron, WI 54812
- Center Park Apartments:** 1202 W. Center Street
Chetek, WI 54728
- Pine Park Apartments:** 800 W. Allen Street
Rice Lake, WI 54728

Rental Office

Franklin School Apartments
1011 South Main Street
Rice Lake, WI 54868

 715-418-4100

 715-972-8956

 ricelakeregion@impactseven.org

 impactseven.org



"This institution is an equal opportunity provider and employer."



BARRON COUNTY HOUSING

FAMILY HOUSING

PROFESSIONALLY MANAGED BY
IMPACT MANAGEMENT GROUP, LLC



Barron - Chetek - Rice Lake
Phone: 715-418-4100
Fax: 715-972-8956

BARRON COUNTY HOUSING: BARRON, CHETEK, & RICE LAKE, WISCONSIN



Apartment Amenities

- 2 & 3-Bedroom Apartments
- Trash Included
- Cable Ready
- Air Conditioning
- Window Blinds

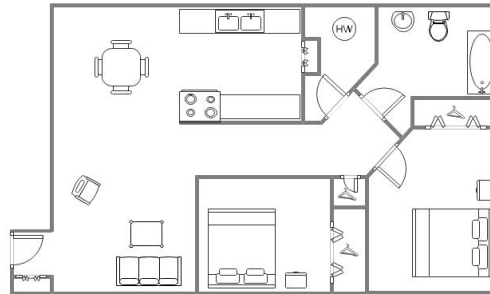
Community Amenities

- 24-hr Emergency Maintenance
- Locked Intercom Entry
- Ample Off-street Parking
- On-site Laundry
- Barbeque Areas
- Playground
- Smoke Free

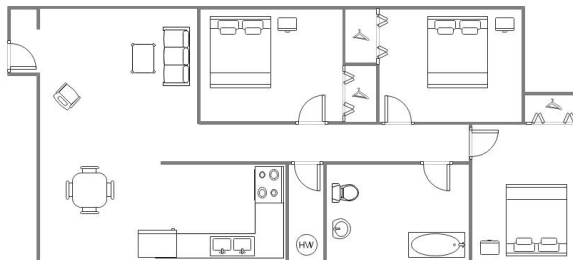
Barron County Housing includes Maple Park Apartments in Barron, Center Park Apartments in Chetek, and Pine Park Apartments in Rice Lake. These buildings feature two- and three-bedroom apartments available for low-income families.

Floor Plans

2 Bedroom



3 Bedroom



Rent Information

- Qualified Residents pay 30% of their adjusted income.
- Security deposit is equal to one month's rent + utility allowance.

Sample Rent		Potential Rent	
Monthly Income	\$900	Monthly Income	\$ _____
	X		X
Percent of Adjusted Income	30%	Percent of Adjusted Income	30%
	=		=
Gross Rent	\$270	Gross Rent	\$ _____
	-		-
Utility Allowance	\$30	Utility Allowance	\$ _____
Net Rent	\$240	Net Rent	\$ _____

Unsure if you or a family member qualifies? Our Community Manager would be happy to assist you!